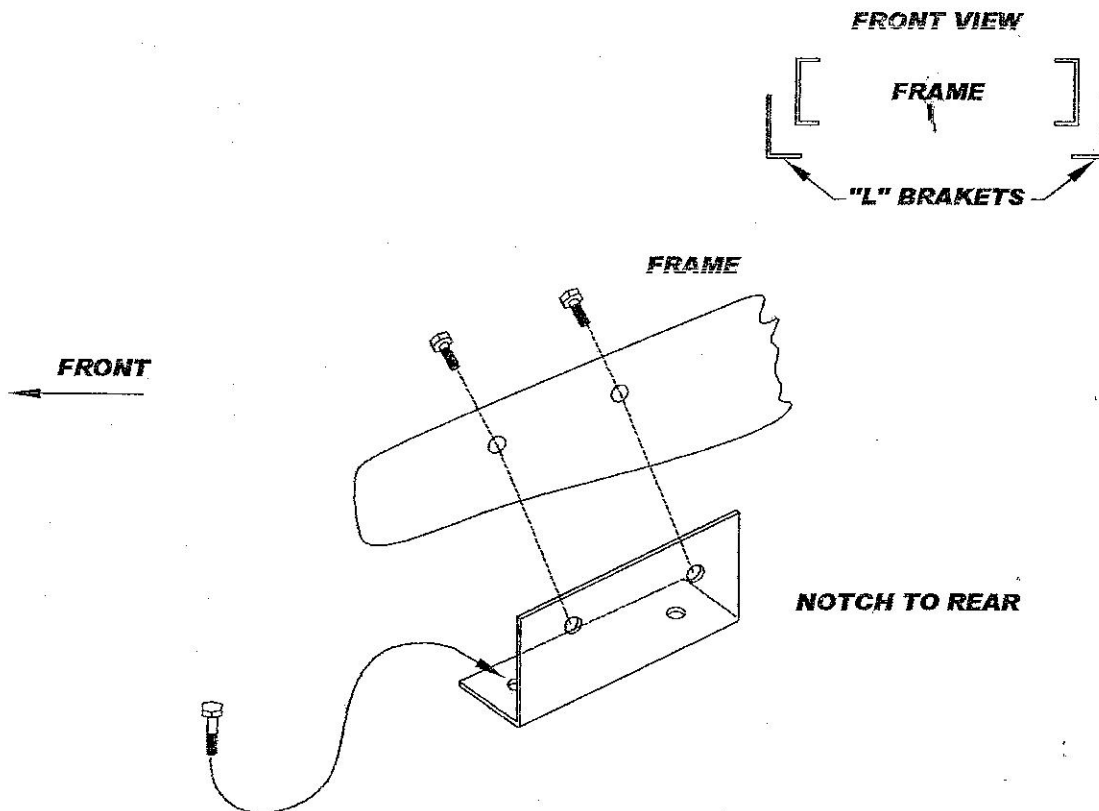


57, 58, 59 Ford front anti-sway bar.

Also 58-60 TB535 Front only!

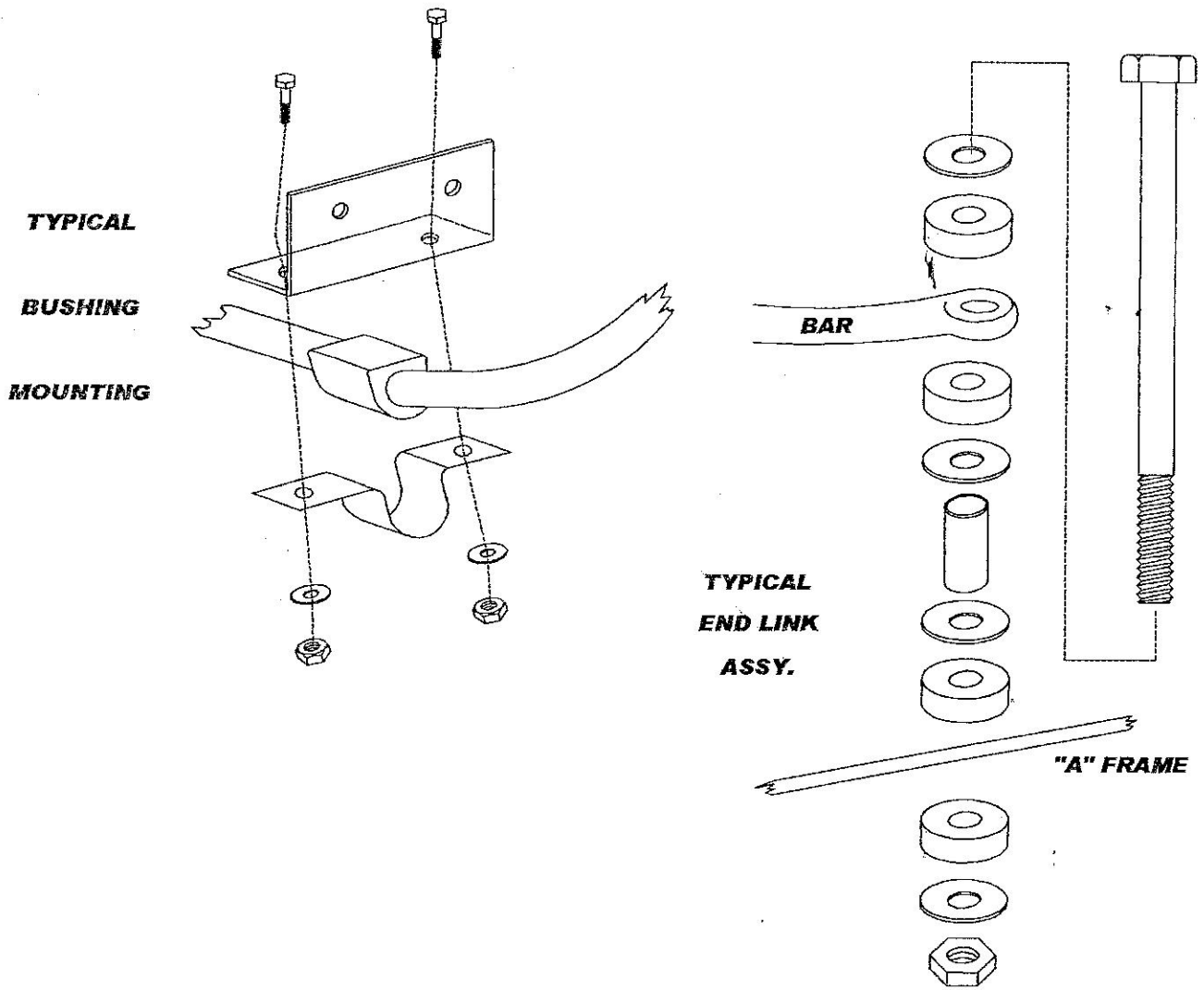
5XH, 6H, 9XH Front only!

1. Read all instructions before starting work.
2. Raise and support front end of vehicle with suspension "hanging".
3. Remove factory front bar and all hardware.
4. Remove front bumper bracket to frame bolts and install "L" brackets.
Do one (1) side at a time to prevent bumper from shifting. (Its is also a good idea to place two (2) bolts down through "L" bracket before installing.)



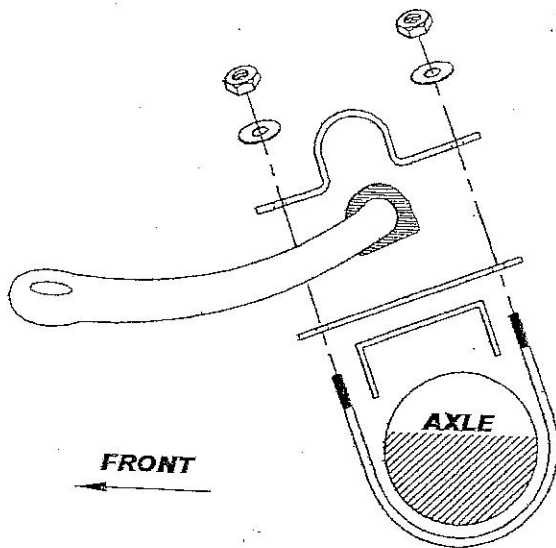
5. After brackets have been installed, lubricate with a wipe of grease and place urethane bushings on bar and place bar into position. Generally bends in the bar end face down.
6. Loosely mount bushing clamps to "L" brackets. Assemble end links to hole in the end of the bar and hole in lower "A" frame. Notice that end links may not stand perfectly straight up and down. This is acceptable.

7. Make sure bar is centered. Then tighten end links and clamps.
Do not over tighten end links, only snug, or damage to bushing will occur.
8. Let car down from jacks and check that nothing rubs.
9. Take vehicle for test drive. Enjoy!

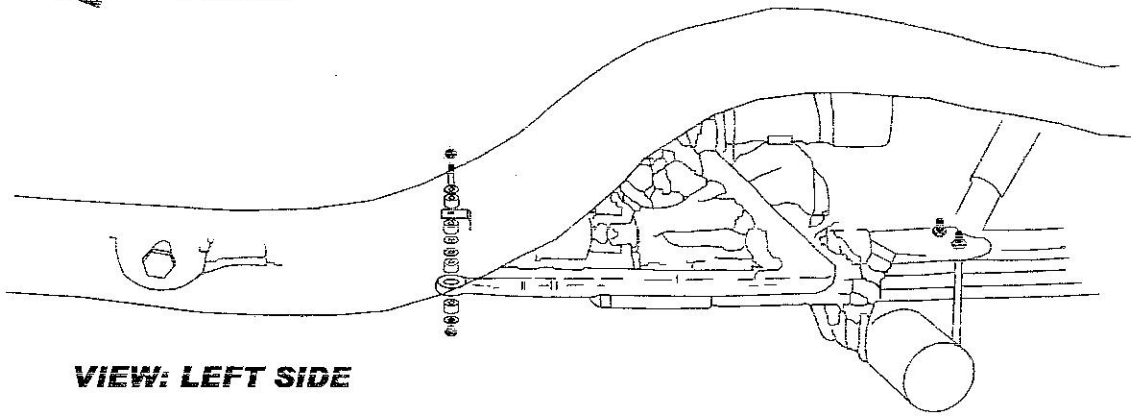


REAR BAR INSTALLATION

JACK UP CAR AND REMOVE REAR WHEELS. PLACE BAR ON TOP OF AXLE HOUSING AND LOOSELY ASSEMBLE AXLE BRACKETS. BE SURE TO REMOVE THE NUT HOLDING BRAKE "T" BLOCK AND LET LINES "FLOAT" FOR NOW. DO NOT LET BRAKE LINE PINCH UNDER "U" BRACKET. POSITION "L" BRACKET ON FRAME AS SHOWN. SEE PAGE 2

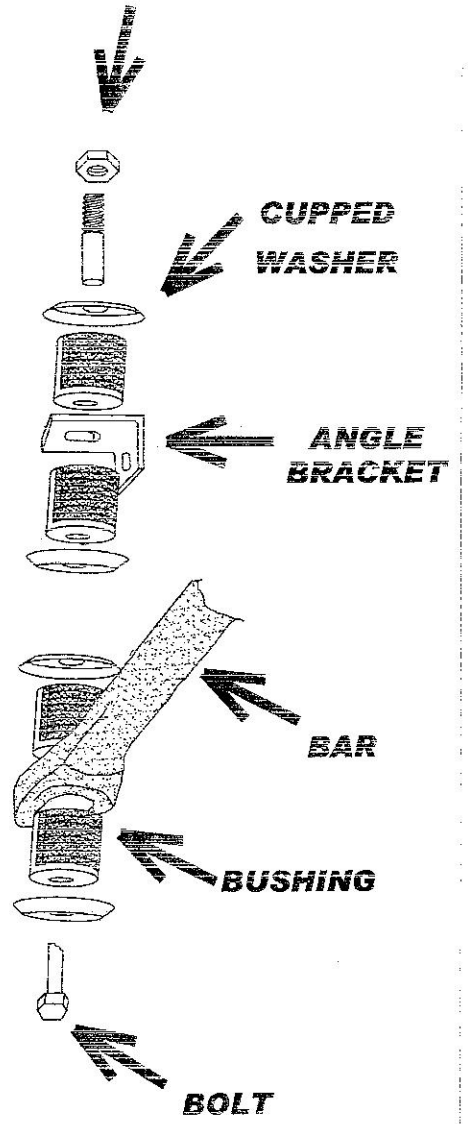
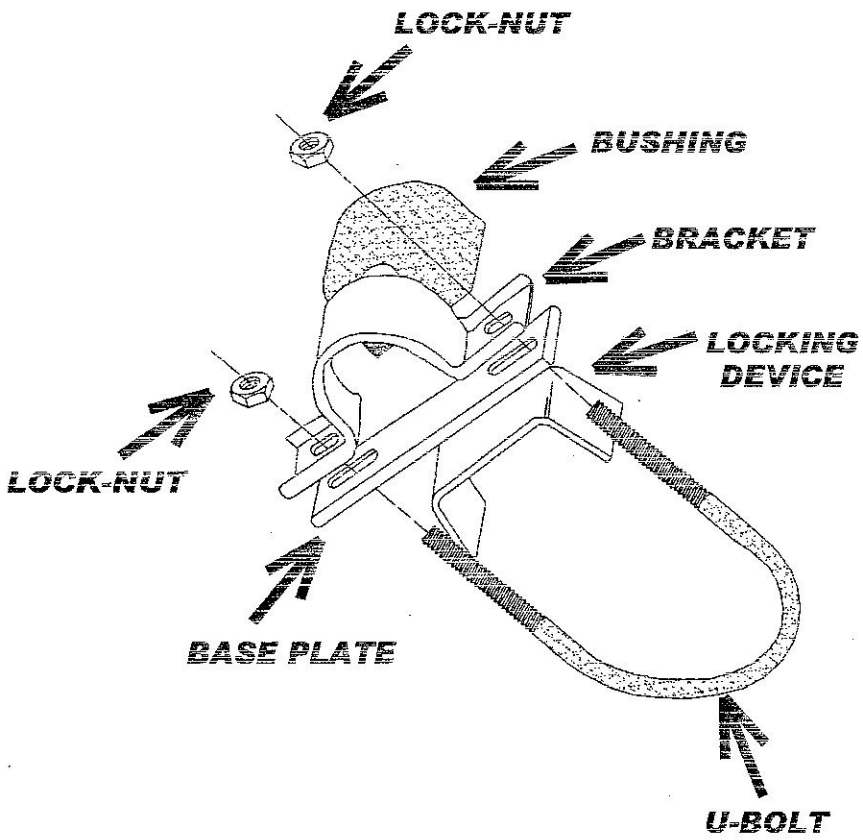


← **FRONT**

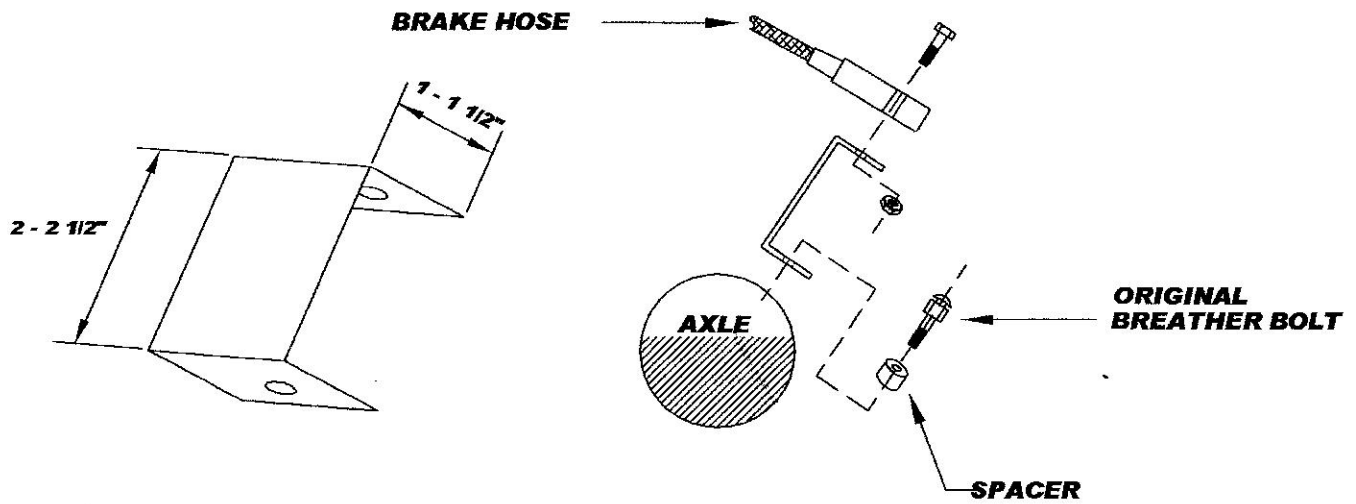


VIEW: LEFT SIDE

END-LINK ASSEMBLY



RELEASE BRAKE LINES AND HOSE TEE FITTING FROM AXLE HOUSING. ALLOW TO "FLOAT" DURING INSTALLATION OF BAR. AFTER BAR IS INSTALLED GENTLY BEND RIDGID BRAKE LINES FOR CLEARANCE AROUND "U" BOLTS. IT IS RECOMMENDED THAT YOU FABRICATE A SMALL 2" EXTENSION AS SHOWN TO RAISE BRAKE TEE FITTING ABOVE BAR. BRAKE HOSE SHOULD RUN OVER TOP OF BAR.



SUGGESTED DIMENTIONS